



A LEVELS

2023/24



99% PASS RATE

WITH 76% ACHIEVING HIGH GRADES



A LEVELS WELCOME TO WIGAN & LEIGH COLLEGE



We believe that an outstanding education can transform lives. The academic success and personal development of each of our students is central to all that we do.

Securing a place at some of the UK's top universities continues to be competitive. We have developed our A Level Professional Pathways, based at our Parsons Walk Centre in Wigan and at Leigh College, to offer our students a commitment to a specific career path, above and beyond the traditional three A Levels.

We liaised with established partners at top universities and high profile employers to develop a programme that reflects their requirements when selecting high calibre students for jobs and further studies.

While many students have a good idea of the career path they want to follow, we appreciate that some do not. If that is the case, you may choose A Levels which do not follow a specific career route, subject to a discussion with us and our timetabled options.

2022 was the first fully examined A Levels since the onset of COVID. Despite the expected drop in pass rates our students managed to exceed the national average, with 99 percent of them passing, and 76 percent achieving high grades.

Our offer combines traditional academic study, alongside professional qualifications and work experience. This means that you can secure places at your chosen universities, or with prestigious employers as higher apprentices.

Our academic tutors deliver excellent tuition so that students may reach their full potential.

We have a strong pastoral system that combines care and support, alongside careful monitoring of academic and personal progress.

We are very proud of our students' achievements with more than 400 progressing to some of the UK's leading universities each year.

Don't just take my word for it. See what our students have to say for themselves - visit the QR code at the top of this page for life at Wigan & Leigh College from the class of 2022.

We look forward to you joining us in September 2023.

ANNA DAWE
PRINCIPAL



3	A LEVELS - EXCEED EXPECTATIONS	25-28	ECONOMICS & BUSINESS
4	A LEVEL EXTENDED CHOICES	29-30	LAW & CRIMINOLOGY
8-9	ACADEMIC DEVELOPMENT DAY	31-34	SCIENCE TECHNOLOGY
10-11	A LEVEL LIFE		ENGINEERING & MATHS (STEM)
12	FACILITIES	35-37	SOCIAL SCIENCES & HUMANITIES
13	VIRTUAL COLLEGE TOURS	38	OPEN EVENTS
14	A LEVELS AT LEIGH COLLEGE	39	GETTING TO COLLEGE
15-16	SUPPORTING YOU THROUGH YOUR STUDIES	40	APPLICATION FORM
17-20	APPLIED MEDICAL & HEALTH	42	HOW TO APPLY
21-24	CREATIVE STUDIES		

A LEVELS - EXCEED EXPECTATIONS

Our A Level programme has been designed in response to the findings of some of the UK's best universities and leading businesses. Collectively, they have identified a need for students to be equipped with the academic knowledge and practical skills to succeed at university and to achieve career aspirations.

WHY SHOULD I CHOOSE WIGAN & LEIGH COLLEGE TO STUDY A LEVELS?

Our A Level centres are based at Parsons Walk in Wigan and at Leigh College where you will have the opportunity to exceed the traditional entry requirements of prestigious Russell Group universities and major employers.

Although each university defines its own entry requirements, there is a need for students to demonstrate commitment through relevant work experience and extra-curricular activities to support university applications.

We offer academic qualifications through A Level provision, alongside essential professionally related experiences.

YOU CAN CHOOSE ONE OF THE FOLLOWING A LEVEL PROFESSIONAL PATHWAYS



A LEVEL EXTENDED CHOICES

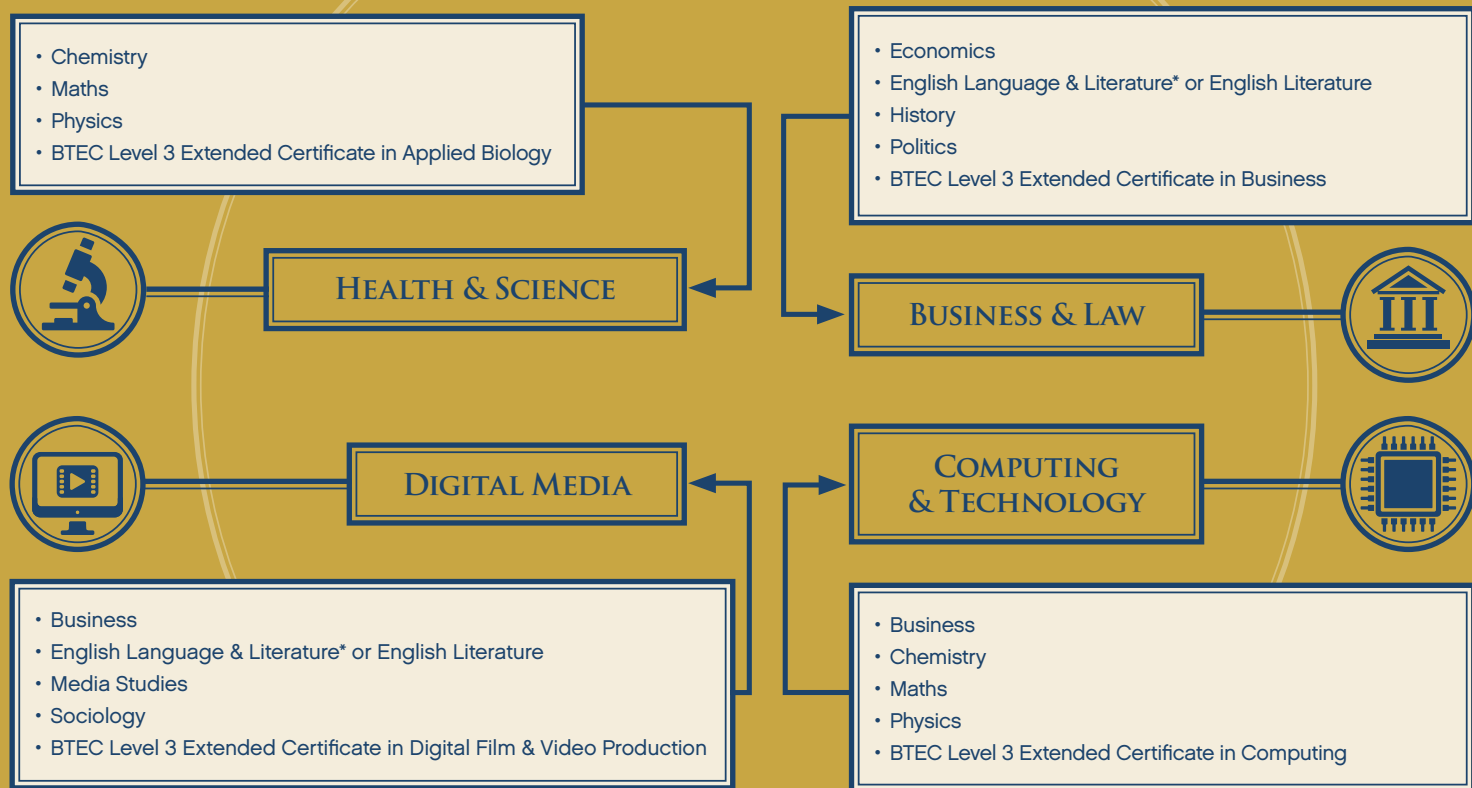
Extended Choices was developed for those who prefer a combination of assignments and exams. You may choose two A Levels and a Level 3 BTEC Extended Certificate to prepare for health and science, business and law, film and digital media and computing related careers. Our Extended Choices programme is delivered at the Parsons Walk Centre in Wigan town centre.

The combination of a practical and coursework focused qualification with A Levels is accepted by the country's top universities. However if you wish to follow a career in medicine or veterinary science we advise the A Level Professional Pathway in Applied Medical and Health.

You may choose one of our A Level Professional Pathways or A Level Extended Choices as our recommended route to your chosen career.

If you are unsure which career you want to follow please contact us, as you may study three A Levels of your choice, subject to discussion and timetable arrangements.

YOU CAN CHOOSE ONE OF THE FOLLOWING A LEVEL EXTENDED CHOICES



WHAT WILL I STUDY?

Academic:

- three complementary A Levels
- the opportunity to study 4 AS Levels in the first year
- or Extended Choices - a mixed programme of 2 A Levels and a BTEC Level 3 qualification delivered at Parsons Walk, Wigan.

Academic Development Day includes:

- CREST Gold Award
- Science Club
- Extended Project Qualification
- HE+ programme in partnership with Cambridge University
- Guest speakers from industry and universities
- Work placement/internship
- Professional qualifications
- Bar Mock Trial competition

We will also support you to prepare for the UKCAT and BMAT qualifications (dentistry, medical and veterinary science admissions tests) and will support you with mock interviews.

Through our unique partnership with Cambridge University, as a Higher Education Consortium member, we will help you prepare university applications and gain an insight into the undergraduate experience. The Cambridge HE+ Programme includes tutorials and visits delivered by Fellows from the University of Cambridge, as well as residential visits.



OUR COMMITMENT TO YOU

We guarantee:

- ◉ Additional academic support tutorials delivered individually, or in small groups.
- ◉ Opportunities to take up enterprise projects and compete in local and national competitions.
- ◉ Enrichment opportunities adding value to applications for higher study and chosen careers, including an enhanced guest speaker programme.
- ◉ Small class sizes in chosen subject areas.



JOIN THE HAPPIEST STUDENTS IN GREATER MANCHESTER OUTSTANDING STUDENT SATISFACTION*

*NATIONAL STUDENT SURVEY (NSS) / FORMER FE CHOICES SATISFACTION SURVEY

EMPLOYER SEAL OF APPROVAL

The A Level Professional Honours Programme has the seal of approval from some of the UK's leading employers

Bridgewater Community Healthcare NHS Foundation Trust (Bridgewater) is a leading provider of community health services in the north west of England.



"We are very proud to be working in partnership with Wigan & Leigh College. Over the years we have, and continue to deliver, many successful work placements, apprenticeships and cadet programmes in both healthcare and non-clinical roles.

Every student reports satisfaction with their placements and we will continue to develop programmes that clearly demonstrate the benefits of a career in the NHS."

**Karla Rimaitis, Talent For Care Programme Facilitator
Bridgewater Community Healthcare NHS Foundation Trust**



"Wigan & Leigh College continues to positively support Sellafield Ltd by giving our employees valuable skills, as well as the chance to gain a lot of experience and knowledge throughout their time at College. The feedback is always positive and it is a pleasure to work with people who inspire and influence such ambition in others."

**Kelly-Marie Fulton
Sellafield Ltd**



"HUSCO International has chosen to partner with Wigan & Leigh College to provide valuable industrial experience, supporting students in achieving academic qualifications to form the cornerstone of a rewarding career in engineering."

**Vicky Dunbar (HR Manager)
Husco International**

ThoughtWorks®

"Wigan & Leigh College's work experience students work hard and are a credit to the College. While on placement A Level Computing students coded an app, carried out programming, experienced a virtual reality machine, had a demo with Alexa and augmented reality, completed user journey mapping and built a prototype."

**Phil Thornley, Product Manager
ThoughtWorks
(Creative Technology Consultants)**

STUDENT SUCCESSES



HAYDEN MANTON

ASPIRING ETHICAL HACKER

Former School:

Bedford High School

Results:

B Physics

B Computer Science

B Maths

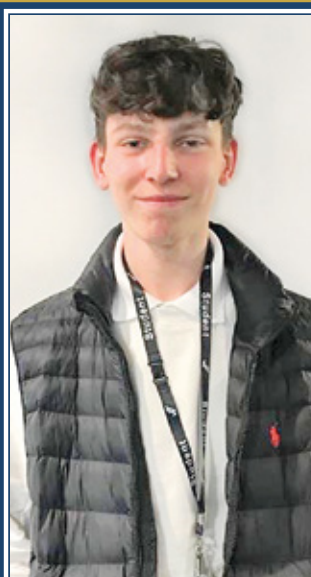
University:

BSc (Hons)

Computer Science

- Edge Hill University

Hayden achieved the Gold Crest Award for conducting real research.



DREW WHITTLE

ASPIRING MEDICINAL CHEMIST

Former School:

Parklands High School

Results:

B Psychology

B Chemistry

Distinction*

BTEC Level 3 Extended

Certificate in Human Biology

University:

MChem Medicinal Chemistry

with Pharmacology

with a Year Aboard

- University of Liverpool



CAITLIN WARNER

ASPIRING EARLY YEARS TEACHER

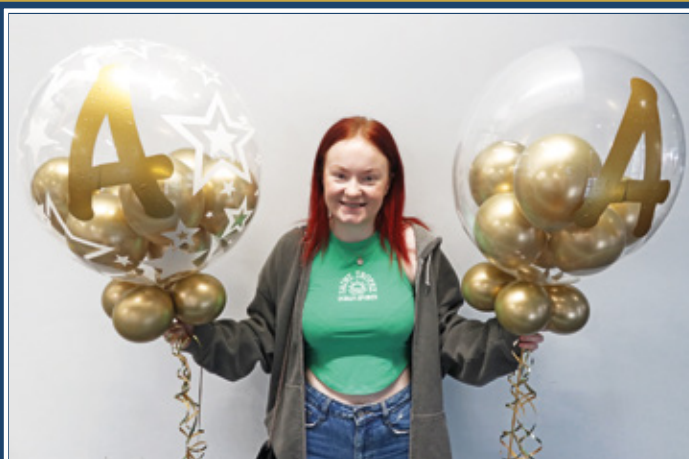
Former School: Burscough Priory Academy

Results:

A Sociology, **A** History, **A** Politics

University:

BA (Hons) Classical Civilisation - University of Leeds



ANNA BONEHILL

ASPIRING PROJECT MANAGER

Former School: Albany Academy

Results:

A* Sociology, **A** Psychology, **C** Chemistry

University:

BSc (Hons) Psychology - University of Edinburgh

ACADEMIC DEVELOPMENT DAY

Alongside your portfolio of study, you will have an additional dedicated Academic Development Day, each week throughout the year.

You will benefit from a range of extra qualifications, placements and voluntary work to build the skills and attributes required by top universities and employers.

Additional nationally recognised qualifications and practical activities have been carefully selected to provide the best opportunities to strengthen university applications and prepare for higher level study in chosen career pathways.

As part of the Academic Development Day all students may take part in:

- career related work placement/internship
- charity fundraising activities
- sailing qualification
- mock interviews for university and higher/degree apprenticeships
- UCAS preparation
- First Aid qualification
- A Level magazine production
- HE+ Programme in partnership with Cambridge University.

Extended Project Qualification (EPQ) demonstrates individual creativity and adds depth to university applications, as well as UCAS points.

- The EPQ is a self-directed project studied in your second year. You will:
- explore a topic not directly taught in your A Level subjects
- plan, research and develop the idea
- produce a research-based written report.



APPLIED MEDICAL & HEALTH ACADEMIC DEVELOPMENT DAY OPTIONS

- Medical Society
- CREST Gold Award
- First Aid qualifications
- Dementia Friend Training
- HE+ programme in partnership with Cambridge University
- Guest speakers from industry and universities
- Work experience.

CREATIVE STUDIES ACADEMIC DEVELOPMENT DAY OPTIONS

- Contribution to A level magazine
- Extended Project Qualification
- Guest speakers from industry and universities
- Work experience.

ECONOMICS & BUSINESS ACADEMIC DEVELOPMENT DAY OPTIONS

- Extended Project Qualification
- HE+ programme in partnership with Cambridge University
- Guest speakers from industry and universities
- Work experience.

LAW & CRIMINOLOGY ACADEMIC DEVELOPMENT DAY OPTIONS

- Bar Mock Trial competition
- Attendance to annual Criminology and True Crime conference
- Extended Project Qualification
- HE+ programme in partnership with Cambridge University
- Guest speakers from industry and universities
- Work experience.

SCIENCE, TECHNOLOGY, ENGINEERING AND MATHS (STEM) ACADEMIC DEVELOPMENT DAY OPTIONS

- CREST Gold Award
- Science Club
- Extended Project Qualification
- HE+ programme in partnership with Cambridge University
- Guest speakers from industry and universities
- Work experience.

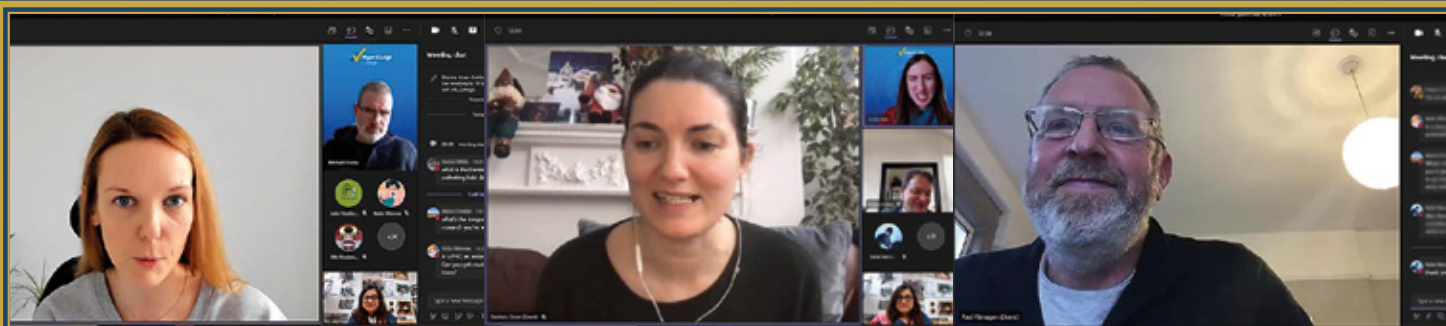
THE BEST DEFENCE BAR NONE

Students enjoyed success in their defence case at the prestigious Bar National Mock Trial at Preston Crown Court.



The latest team to take part won the trial verdict, working with judges and barristers to prepare and deliver Crown Court cases.

The Judge praised the future legal eagles for their skilful speeches and sharp deliveries of their examination in chief and cross examination.



INDUSTRY PROFESSIONALS SHARE SECRETS OF SUCCESS

Industry leaders from medical research, film production and the automotive industry shared their routes to success. Dr. Leah Bowen shed light on her role as a medical research assistant, with tips on how to master medical school interviews. Story producer of BBC Three's Nail Bar Boys, Saoirse Crean, lifted the lid on how she got into film production. And living and working abroad was a theme for former Renault Managing Director and President of Ford France, Paul Flanagan.

A LEVEL LIFE

Get involved in a range of activities alongside your studies. Develop new interests, improve your knowledge base, pick up new skills and boost your self-confidence.



^ CAPITAL TOUR

Students took a trip to London for two days of sightseeing, culture and learning. Their first stop was the Parliament's public gallery, where they watched the Commons in full session. They completed the tour with a workshop on the importance of democracy and the right to vote.



<< NATIONAL CHEMISTRY AWARD

A Level Chemistry student, Drew Whittle, came in the top 30 per cent out of 8,600 students taking part in the Royal Society of Chemistry Annual Olympiad.

You will build evidence of wider achievements for university interviews and job applications, including leadership skills, self-motivation and good time management.



^ FOLLOWING THE TRAIL OF HISTORIC FEMALE AUTHORS

Students took a trip to the Bronte Parsonage at Haworth to visit the home of the literary sisters, Anne, Emily and Charlotte Bronte - authors of Agnes Grey, Wuthering Heights and Jane Eyre.

They learned more about the lives of the Brontes, took a tour around the parsonage, visited the church and explored the West Yorkshire village.



^ EDGE HILL UNIVERSITY HE FAIR

Students took a trip to Edge Hill University to find out more about life as an undergraduate. They took a tour of the campus with its picturesque landscaped grounds, historic buildings and state of the art facilities.

✓ REVISION SKILLS AND MINDSET WORKSHOP

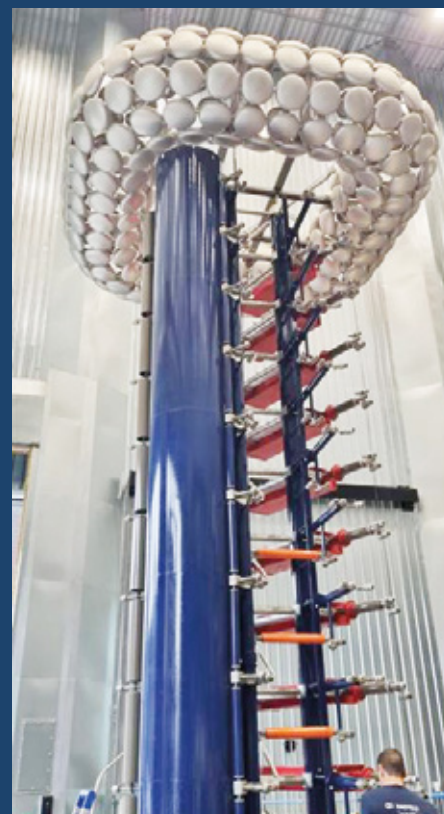
Memory techniques and the importance of positive thinking were on the agenda when Martin Travers of Made Training visited the College.



^ CREATING THE PERFECT STORM

The University of Manchester's brand new Engineering building, was the focus for students who took a trip to one of the leading red brick universities.

Students were blown away by the university's lightning impulse generator, capable of simulating bolts of a whopping 2 million volts. They also took a tour of lecture and workshop facilities dedicated to mechanical, aerospace and electrical engineering.



<< ALL TOGETHER NOW FOR FILM DIRECTOR WORKSHOP

Media and film students learned more about the world of movie directing in a workshop with Carl Hunter, award winning director and former bassist for the 90s band The Farm.

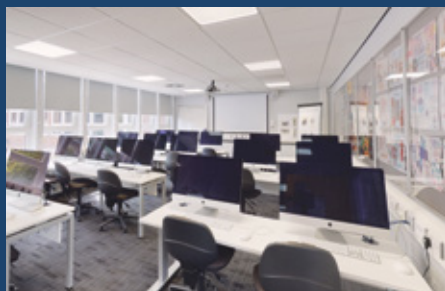
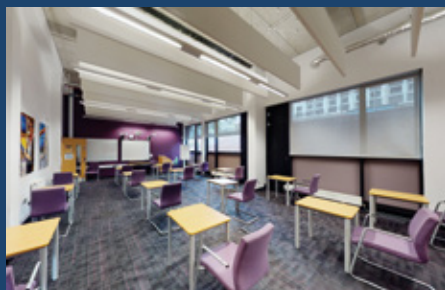
EXCEPTIONAL LEARNING FACILITIES

Students who are successful in securing a place on our A Level programme will benefit from exceptional learning facilities.

PARSONS WALK CENTRE

At the Wigan centre, you will enjoy the sixth form experience in our contemporary Professional Studies Building.

You may also benefit from our brand new purpose built science laboratories and state-of-the-art science resources.



LEIGH COLLEGE

At Leigh College, you will enjoy the sixth form experience in a vibrant campus located on the multi-million pound Leigh Sports Village site.

Brand new science labs provide university standard facilities and equipment. A fully equipped art department is home to A Level Art and our first Digital Academy and Clinical Skills lab.



PAGEFIELD CENTRE

Engineering students access our multimillion pound industry standard facilities, at our Centre for Excellence in Engineering, based at the Pagefield Centre, during their Professional Development Day. £1.8 million was spent on refurbishing the Centre and equipment.



VIRTUAL COLLEGE TOURS

You can now explore our centres and facilities online with 360° virtual tours. See for yourself why Wigan & Leigh College is such a great place to be. You can visit each of our centres and check out A Level classrooms, laboratories, art rooms and much more.

Visit wigan-leigh.ac.uk/virtual-tours for a look around.

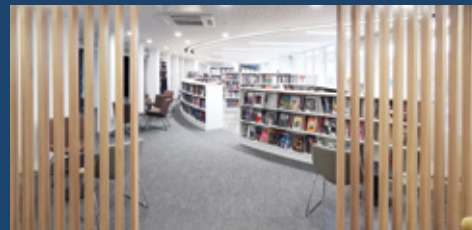
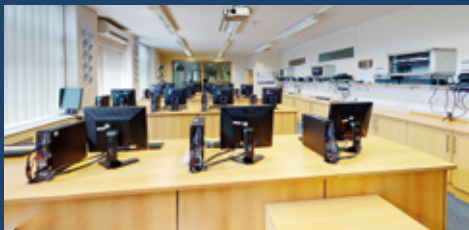
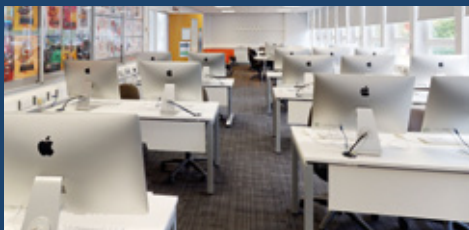
WIGAN & LEIGH COLLEGE

Parsons Walk Centre WN1 1RR



LEIGH COLLEGE

Leigh Sports Village WN7 4JY



A LEVELS AT LEIGH COLLEGE

Leigh College is a great place to study A Levels, especially if Fine Art is one of your subjects as it is an exclusive option here.

You can follow one of our pathways in your chosen career route and choose from our specially selected A Level subjects, or if you are not sure which career you want to follow, you can mix and match your choices*.

Those who mix and match may also take part in the Academic Development Day with the opportunity to complete an Extended Project Qualification in the second year of study and gain valuable work experience.

A Level subjects include:

- Biology
- Business
- Chemistry
- Computing
- Economics
- English Language & Literature*
- English Literature
- Fine Art†
- History
- Maths
- Media Studies
- Physics
- Politics
- Psychology
- Sociology

*AS is no longer a stand alone option. †Extended Choices is held at Parsons Walk only in 2023-24. ‡A Level Fine Art is based at Leigh College.



SUPPORTING YOU THROUGH YOUR STUDIES

As a student at Wigan & Leigh College your needs always come first. That's why we have a pastoral system in place to provide you with the support and professional guidance you need.



PERSONAL TUTORS



At the beginning of term you will be assigned a personal tutor. You will get to know them and become a member of a tutor group which meets regularly. Ultimately your personal tutor will help you settle in and adjust to College life.

Personal Tutors will:

- guide you through your course
- create an action plan to help you reach your goals
- track your progress and achievements
- help you access support
- offer advice about overcoming challenges.

HEAD OF STUDIES

Each College Centre has a dedicated Head of Studies who will make sure that you receive pastoral support to be successful in your studies.

This may include help to keep your attendance up, or support with developing your study skills to achieve your full potential.

Their role is to ensure that high standards are maintained and that you enjoy a positive learning experience during your time at College.

FREE

**BUS PASS
SCHEME**



Visit: wigan-leigh.ac.uk/free-travel

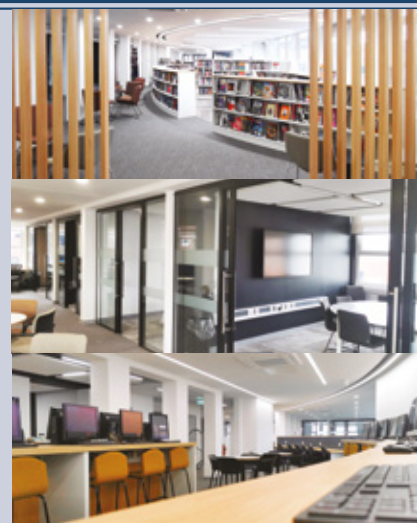
LEARNING RESOURCES CENTRE

The Learning Resources Centre (LRC) at Parsons Walk is a modern and spacious environment for a multi-functional way to study.

There is a fast access PC zone, increased laptop and PC capacity, reading and wellbeing area, with lots of working spaces for group, project and individual study.

Leigh College also has its own LRC and a library with access to a wide range of books, magazines, newspapers, subject specific publications, DVDs and CDs.

Students may access computers and online resources, including the College intranet, Office applications, e-books, WiFi access and Moodle – the College Virtual Learning Environment (VLE). Staff are on hand to help with enquiries and support for you to find the most relevant information relating to your course.



SUPPORT TO ACHIEVE YOUR DREAM CAREER



We make sure that every young person has the support to develop skills for a rewarding and successful career, putting careers education at the heart of everything we do.

We are a lead college within the Greater Manchester Careers Hub, Bridge GM and the first in the Wigan Borough to achieve the 8 Gatsby Benchmarks - government guidelines that define the best careers provision in schools and colleges.

FAB FUTURES

We work with you to raise aspirations, explore career options, develop employability skills through meaningful work placement and work experience, so you progress to great destinations when you leave College.

The specialist team can support you with:

- Progression to the next course at College
- Applications to universities including the University Centre Wigan & Leigh College
- Finding an apprenticeship
- Securing meaningful work placements
- Developing employability skills
- Finding employment.

CAREER PLANNING

As part of our commitment to providing high quality careers education, information, advice and guidance we provide experiences to support you in achieving your dream career. We hold industry guest speaker sessions, provide visits to workplaces and opportunities to work on live briefs and projects developed by employers.

We use up-to-date labour market information to help you explore careers in your chosen industry, find out more about salary and earnings, growth opportunities and the key skills to succeed. This information is available on the College website wigan-leigh.ac.uk

COLLEGE BURSARY*

Bursaries are available for full-time students aged 16-19, who have a household income of less than £26,000 per year.

You may receive:

- **£55 each month**
- **travel support**
- **free College lunch.**

*2022/23 bursary offer which may be subject to change for 2023/24

INDUSTRY & CAREERS PLACEMENTS

Every A Level student will carry out work experience to develop the knowledge and skills learned at College and improve your chances of gaining employment through vital hands on experience.

We provide guidance and activities to help you succeed in finding placement opportunities. And we make sure your workplace is a safe environment to gain an insight into the world of work.

A work placement shows you how your course can help develop your future career plans. It also provides the opportunity to:

- develop key skills for your career choice
- develop your employability skills and professional behaviour
- discover new talents
- strengthen your CV
- improve your knowledge of industry.

The College's Careers Strategy and Careers Programme is at wigan-leigh.ac.uk/careers

APPLIED MEDICAL & HEALTH



The recommended combination of A Levels will prepare you for progression towards applied medical or careers in health services. You will gather evidence and gain the necessary skills to support your UCAS application for medical based or health related degrees.

We provide you with the very best opportunities to develop the skills to secure your chosen career path and for your future success in this industry.

If you are unsure which career you want to follow please contact us, as you may study three A Levels of your choice, subject to discussion and timetable arrangements.

We combine traditional academic A Level subjects with the essential professional related experiences to offer you a comprehensive programme of study.



A LEVEL PROFESSIONAL PATHWAYS

ENTRY REQUIREMENTS

GCSE TARIFF

**Biology
Chemistry
Maths
+ a further AS Level in year 1**

OR

**Biology
English Literature OR
English Language and Literature*
Psychology OR Sociology
+ a further AS Level in year 1**

8 GCSEs graded 9-5 of which a minimum of 4 GCSEs graded 9-6 (including English, Maths and Science)

If you wish to apply for a medicine degree you will need high GCSE grades

*AS is no longer a stand alone option.

EXAMPLE UNIVERSITY COURSES

TYPICAL ENTRY REQUIREMENTS

BA Biomedical Sciences - University of Oxford

A* | A | A

MB BChir Medicine - University of Cambridge

A* | A* | A

MBChB Medicine - University of Manchester

A | A | A

BSc Medical Pharmacology - University of Cardiff

A | A | B

BVSc Veterinary Science - University of Liverpool

A | A | A

BSc Diagnostic Radiography - University of Salford

B | B | B

BNurs Mental Health Nursing - University of Manchester

B | C | C

BSc Physiotherapy - King's College London

A | A | B

BA Midwifery - Liverpool John Moores University

A | B | B

CAREER OPPORTUNITIES

Dentist | Doctor | Cardio-Pulmonary Perfusionist | Clinical Scientist | Midwife | Nurse | Occupational Therapist | Pharmacist
Physiotherapist | Radiographer | Veterinary Surgeon | Zoologist

ACADEMIC DEVELOPMENT DAY

Students benefit from a range of extra qualifications, work placements, voluntary work and masterclasses, delivered by industry experts. Options include:

- Medical Society
- CREST Gold Award
- First Aid qualifications
- Dementia Friend Training
- HE+ programme in partnership with Cambridge University
- Guest speakers from industry and universities
- Work experience



AS CHOICES APPLIED MEDICAL AND HEALTH:

You will study 4 AS Levels in the first year in combinations included in the table on page 17 from the following options:

BIOLOGY

Explore the variety of life and the biochemical basis of all living things, before analysing the role of cells, tissues and organs. Learn about the complexity of ecosystems, and study cutting-edge gene technology. Develop important practical skills in the life sciences, including fieldwork.

CHEMISTRY

Understand the world around you in much greater detail, finding out more about trans-fats or why some chemicals smell and others do not. Learn why your mobile device uses a lithium ion battery, how some medicines are made and why others can be dangerous.

MATHS

Study three areas: Pure Mathematics, Statistics and Mechanics to develop problem solving skills. Understand maths and its processes to increase confidence, foster enjoyment and provide a strong foundation for further study. Learn how to apply maths in other fields of study and be aware of the relevance of it to the world of work and in society.

ENGLISH LANGUAGE AND LITERATURE*

Explore representations of places, society and conflict through analysis of linguistics and literature across a range of non-literary texts, poetry, novels and drama.

ENGLISH LITERATURE

Learn how to analyse and evaluate poetry, prose and plays, debate and challenge the views of others, get a grounding of theory and key contextual areas and develop your skills in academic writing.

PSYCHOLOGY

Study the scientific explanations of the mind and behaviour including areas such as: forensic psychology, sport psychology, developmental (child) psychology, and topics from autism to a study of the language of psychopaths.

SOCIOLOGY

Develop an understanding of society through the analysis of social relationships, interactions and culture. Topics include, families and households, education, beliefs in society, crime and deviance and theory with research methods. Explore the impact of age, ethnicity, gender and social class.

*AS is no longer a stand alone option.



A LEVEL EXTENDED CHOICES - HEALTH & SCIENCE

If you choose to attend Parsons Walk, Wigan you may study a mixed programme of A Levels and a BTEC Level 3 qualification to help you fulfil your career ambitions.

This provides an alternative route to university and degree apprenticeships and may be suitable for those who prefer a combination of coursework and examinations.

This pathway is not suitable for those who wish to study medicine or veterinary science and it is not offered at Leigh College..

A LEVELS (choose two from the following)	BTEC LEVEL 3 EXTENDED CERTIFICATE (equivalent to one A Level)	ENTRY REQUIREMENTS
Chemistry Maths Physics	BTEC Level 3 Extended Certificate Applied Human Biology Learn human anatomy and physiology, from the molecules we depend on to the function of the human body. Develop practical skills in microbiology, including the identification of diseases and the selection of appropriate antibiotics. Analyse data and research for human health, and study issues surrounding fertility and reproductive technology.	6 GCSEs graded 9-5 If you wish to study A Level Maths or Science you will need a grade 6 in these subjects at GCSE. Not suitable for those who wish to go on to study medicine and veterinary science.



CREATIVE STUDIES



This pathway will provide a good foundation for further study in the creative industries in media and the arts.

If you are unsure which career you want to follow please contact us, as you may study three A Levels of your choice, subject to discussion and timetable arrangements.

The combination of A Levels, additional qualifications and work experience will develop your enthusiasm and critical understanding of creative organisations.

Our professional links, multimillion pound facilities and industry expert tutors provide the right environment for you to achieve the qualifications, experience and confidence to begin a career in the creative industries. The combination of academic and vocational qualifications is a great choice for students who aspire to study at top universities and establish a successful career.



A LEVEL PROFESSIONAL PATHWAY	ENTRY REQUIREMENTS
	GCSE TARIFF
Fine Art* Media Studies English Literature OR English Language and Literature* + a further AS in year 1	8 GCSEs graded 9-5 of which a minimum of 4 GCSEs graded 9-6 (including English)
<p>* AS is no longer a stand alone option. A Level Fine Art is based at Leigh College.</p> <p>Following successful completion of the AS year you may choose to continue to study all four subjects to A Level. However, you may progress with three subjects and retain an AS qualification in one, which will contribute to your UCAS or higher apprenticeship applications. In the second year of study you will be offered the opportunity to study AS Further Maths.</p>	

EXAMPLE UNIVERSITY COURSES	TYPICAL ENTRY REQUIREMENTS
BA Communication and Media - University of Liverpool	A B B
BA (Hons) Journalism, Media and Culture - Newcastle University	A A B
BA (Hons) Journalism (Multimedia) - University of Salford	A B B

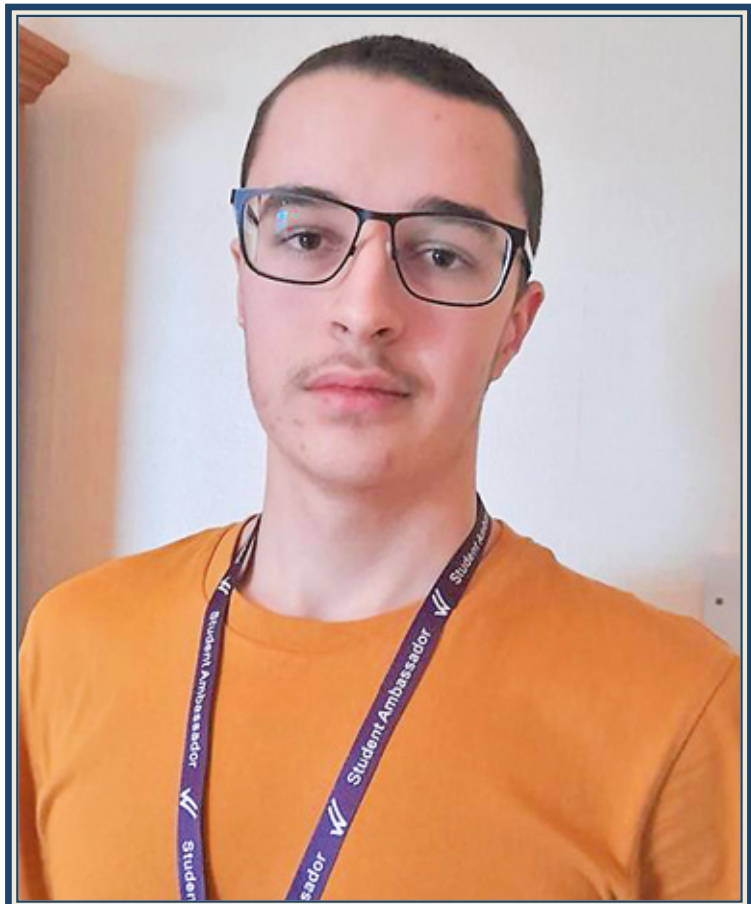
CAREER OPPORTUNITIES

Broadcast Presenter | Copywriter | Fashion Designer | Fine Artist | Graphic and Digital Designer | Illustrator | Journalist
 PR Professional | Script Writer | TV Producer | Photographer | Product Designer | Set Designer/Interior Designer | Textile Designer

ACADEMIC DEVELOPMENT DAY

Students will benefit from a range of extra qualifications, work placements, voluntary work and masterclasses, delivered by industry experts. Options include:

- Contributing to the A Level magazine
- Extended Project Qualification
- Guest speakers from industry and universities
- Work experience



ELLIS ROWLANDS

Former school: Bedford High School

Results:

- B** English Literature
- A** Media Studies
- A** Sociology

AS CHOICES CREATIVE STUDIES

You will study the following AS subjects in the first year:

ENGLISH LANGUAGE AND LITERATURE*

Explore representations of places, society and conflict through analysis of linguistics and literature across a range of non-literary texts, poetry, novels and drama.

ENGLISH LITERATURE

Learn how to analyse and evaluate poetry, prose and plays, debate and challenge the views of others, get a grounding of theory and key contextual areas and develop your skills in academic writing.

FINE ART*

Develop a broad range of skills and techniques from drawing and painting to print, sculpture, ceramics and mixed media. You will explore relevant contemporary and historic images, artefacts and resources from a range of sources and influences in response to negotiated themes.

MEDIA STUDIES

Explore a range of media products in relation to four theoretical frameworks: media language, media representations, media audiences and media industries. Explore the impact of the media on society, culture and politics.

*AS is no longer a stand alone option.



MELISSA COUTTS

Former School:
Golborne High School

Results:
A Media
A Psychology

Melissa is set for a gap year traveling the world with her dad.

A LEVEL EXTENDED CHOICES - DIGITAL MEDIA

If you choose to attend Parsons Walk, Wigan you may study a mixed programme of A Levels and a BTEC Level 3 qualification to help you fulfil your career ambitions.

This provides an alternative route to university and degree apprenticeships and may be suitable for those who prefer a combination of coursework and examinations.

A LEVELS (choose two from the following)	BTEC LEVEL 3 EXTENDED CERTIFICATE (equivalent to one A Level)	ENTRY REQUIREMENTS
Business English Language and Literature* or English Literature Media Studies Sociology	BTEC Level 3 Extended Certificate Digital Film and Video Production Provides the appropriate skills in technical roles such as single & multi camera productions, sound recording and editing. The course will prepare you for entry into creative media roles such as post-production runner, broadcast assistant, assistant to camera crew and many more.	6 GCSEs graded 9-5 If you wish to study English, you will need a grade 6 at GCSE.

*AS is no longer a stand alone option.



ECONOMICS & BUSINESS



The Economics and Business pathway will develop your understanding and appreciation of the nature and scope of the corporate world and the economic and political landscape in which businesses operate.

If you are unsure which career you want to follow please contact us, as you may study three A Levels of your choice, subject to discussion and timetable arrangements.

The combination of A Levels, additional qualifications and work experience will develop your enthusiasm and critical understanding of the business environment.

Economics and business students typically have good commercial awareness, one of the qualities highly sought by recruiters. They are able to effectively apply their knowledge of industries to the job.



A LEVEL PROFESSIONAL PATHWAY	ENTRY REQUIREMENTS
	GCSE TARIFF
Business Economics Politics + a further AS Level in year 1	8 GCSEs graded 9-5 of which a minimum of 4 GCSEs graded 9-6 (including English, Maths and Science)
Following successful completion of the AS year, you may choose to continue to study all four subjects to A Level, or you may progress with three subjects and retain an AS qualification in one, which will contribute to your UCAS or higher apprenticeship applications.	

EXAMPLE UNIVERSITY COURSES	TYPICAL ENTRY REQUIREMENTS
BA Economics - University of Cambridge	A* A* A
BSc Accounting and Finance - London School of Economics	A A A
BA Business and Management - Durham University	A A B
BSc International Business, Finance and Economics - University of Manchester	A A A

CAREER OPPORTUNITIES

Chartered Accountant | Compliance Officer | Data Analyst | Economist | External Auditor
 Financial Risk Analyst | Investment Analyst | Political Risk Analyst | Risk Manager | Statistician | Stockbroker
 Business Development Manager | Data Scientist | Management Consultant

ACADEMIC DEVELOPMENT DAY

Students will benefit from a range of extra qualifications, work placements, voluntary work and masterclasses, delivered by industry experts. Options include:

- Extended Project Qualification
- HE+ programme in partnership with Cambridge University
- Guest speakers from industry and universities
- Work experience



AS CHOICES ECONOMICS AND BUSINESS

You will study four AS subjects in the first year including these mandatory subjects:

BUSINESS

Explore the different types of businesses nationally and internationally. Analyse internal and external influences on business activity and the impact that they have. Develop analytical thinking, problem solving and strong communication skills.

ECONOMICS

Study how decisions are made by consumers and suppliers and how these decisions determine the allocation of resources in the market. Examine how the overall economy behaves and explore phenomena such as inflation, unemployment, and economic growth.

POLITICS

Gain thorough knowledge of the political systems of the UK and USA through comparison and debate, to fully understand how we are governed and what we can do to influence the process.



A LEVEL EXTENDED CHOICES - BUSINESS & LAW

If you choose to attend Parsons Walk, Wigan you may study a mixed programme of A Levels and a BTEC Level 3 qualification to help you fulfil your career ambitions.

This provides an alternative route to university and degree apprenticeships and may be suitable for those who prefer a combination of coursework and examinations.

A LEVELS (choose two from the following)	BTEC LEVEL 3 EXTENDED CERTIFICATE (equivalent to one A Level)	ENTRY REQUIREMENTS
Economics English Language and Literature* or English Literature History Politics	BTEC Level 3 Extended Certificate in Business Develop a range of skills critical to your success in business. Create and present your own marketing campaign, explore different types of businesses and calculate business finance.	6 GCSEs graded 9-5 If you wish to study A Level English, you will need a grade 6 at GCSE.

*AS is no longer a stand alone option.



LAW & CRIMINOLOGY



The Law and Criminology pathway provides opportunities to develop the necessary skills and attributes for this challenging career.

If you are unsure which career you want to follow please contact us, as you may study three A Levels of your choice, subject to discussion and timetable arrangements.

Careers in law and criminology are competitive. You must have analytical skills, focus, and the ability to think creatively and logically, making best use of rational thought to arrive at sound conclusions, often in fast-paced and high-pressured situations.

A LEVEL PROFESSIONAL PATHWAYS			ENTRY REQUIREMENTS
			GCSE TARIFF
English Language and Literature* or English Literature History Politics + a further AS Level in year 1	OR	Sociology Psychology History + a further AS Level in year 1	8 GCSEs graded 9-5 of which a minimum of 4 GCSEs graded 9-6 (including English, Maths and Science)
Following successful completion of the AS year you may choose to continue to study all four subjects to A Level. However, you may progress with three subjects and retain an AS qualification in one, which will contribute to your UCAS or higher apprenticeship applications. In the second year of study you will be offered the opportunity to study AS Further Maths.			

EXAMPLE UNIVERSITY COURSES	TYPICAL ENTRY REQUIREMENTS
LLB Law - University of Manchester	A A A A
Law (Jurisprudence) - University of Oxford	A A A A
LLB Law - Durham University	A* A A A
LLB Law - University of Liverpool	A B B B

Some universities require additional assessments, for example the LNAT - the national admission test for law - we will support you in preparing for this.

CAREER OPPORTUNITIES
Barrister Chartered Legal Executive Coroner Court Reporter Criminal Intelligence Analyst Immigration, Customs and Border Roles Judge Police Officer and Police Support Roles Prison Officer Probation Officer Scene of Crime Officer Social Researcher Solicitor Victim Care Officer Youth Offending Team Officer

ACADEMIC DEVELOPMENT DAY

You will develop all of these skills and more throughout your A Level studies in combination with the activities you participate in on the Academic Development Day. Options include:

- Bar Mock Trial competition
- Criminology and True Crime conference attendance
- Extended Project Qualification
- HE+ programme in partnership with Cambridge University
- Guest speakers from industry and universities
- Work experience

AS CHOICES LAW & CRIMINOLOGY

You will study 4 AS subjects in the combinations set out on page 29 from the following subjects:

ENGLISH LANGUAGE AND LITERATURE*

Explore representations of places, society and conflict through analysis of linguistics and literature across a range of non-literary texts, poetry, novels and drama.

ENGLISH LITERATURE

Learn how to analyse and evaluate poetry, prose and plays, debate and challenge the views of others, get a grounding of theory and key contextual areas and develop your skills in academic writing.

HISTORY

Develop your skills of analysis and critical thinking through the study of British and European topics. Critically evaluate significant periods of the past and develop an understanding of what has gone before to prepare for the future.

POLITICS

Gain thorough knowledge of the political systems of the UK and USA through comparison and debate to fully understand how we are governed and what we can do to influence the process.

PSYCHOLOGY

Study the scientific explanations of the mind and behaviour including areas such as: forensic psychology, sport psychology, developmental (child) psychology, and topics from autism to a study of the language of psychopaths.

SOCIOLOGY

Develop an understanding of society through the analysis of social relationships, interactions and culture. Topics include, families and households, education, beliefs in society, crime and deviance and theory with research methods. Explore the impact of age, ethnicity, gender and social class.

A LEVEL EXTENDED CHOICES - CRIMINOLOGY

If you choose to attend Parsons Walk, Wigan you may study a mixed programme of A Levels and a BTEC Level 3 qualification to help you fulfil your career ambitions. This provides an alternative route to university and degree apprenticeships and may be suitable for those who prefer a combination of coursework and examinations.

A LEVELS (choose two from the following)	BTEC LEVEL 3 EXTENDED CERTIFICATE (equivalent to one A Level)	ENTRY REQUIREMENTS
English Language and Literature* or English Literature History or Media Politics or Business Sociology or Economics	BTEC Level 3 Extended Certificate in Criminology Criminology includes aspects of Law, Psychology, and Sociology. It examines theories on the causes of different types of crime and what makes some people more 'criminal' than others. You will discover why certain crimes are under-reported and will be given the opportunity to create a campaign for change that increases awareness. Year 2 will focus on crime and punishment, exploring the purpose of the criminal justice system and how and why we punish crimes. You will learn about procedures, from the crime scene to the courtroom, and gain an understanding of how the criminal justice system works. You will also be asked to review a criminal case, to ensure that it has been tried fairly.	6 GCSEs graded 9-5

*AS is no longer a stand alone option.

SCIENCE TECHNOLOGY ENGINEERING & MATHS (STEM)



Our STEM pathway provides the academic and professional skills you need to secure a successful career in the science, technology and engineering industries.

If you are unsure which career you want to follow please contact us, as you may study three A Levels of your choice, subject to discussion and timetable arrangements.

This pathway is supported by local industries, including the missile, defence and nuclear sectors. The College's strong industry links and the advantage of studying in the multimillion pound Centre for Excellence in Engineering provides the perfect foundation for those who wish to follow a career in STEM subjects.

This unique suite of academic and vocational qualifications underpins your potential progression to study at the country's most prestigious universities.

This pathway will also provide the basis to establish yourself within the science, engineering or technology sectors, or undertake a higher apprenticeship with a prestigious employer.

A LEVEL PROFESSIONAL PATHWAYS			ENTRY REQUIREMENTS
			GCSE TARIFF
Chemistry Maths Physics + a further AS Level in year 1	OR	Computer Science Maths Physics + a further AS Level in year 1	8 GCSEs graded 9-5 of which a minimum of 4 GCSEs graded 9-6 (including English, Maths and Science)

Following successful completion of the AS year you may choose to continue to study all four subjects to A Level, or you may progress with three subjects and retain an AS qualification in one, which will contribute to your UCAS or higher apprenticeship applications.

EXAMPLE UNIVERSITY COURSES	TYPICAL ENTRY REQUIREMENTS	EXAMPLE UNIVERSITY COURSES	TYPICAL ENTRY REQUIREMENTS
Computer Science - University of Cambridge	A* A* A	BA in Engineering - University of Cambridge	A* A* A
BA Computer Science - University of Oxford	A* A A	MEng - Durham University	A* A A
BEng Computing - Imperial College London	A* A* A	BSc Physics with Astrophysics - University of Manchester	A* A* A
BSc Artificial Intelligence and Computer Science - University of Edinburgh	A A A	BEng Mechanical Engineering - University of Warwick	A A A
BSc Software Engineering - The University of Manchester	A* A A	BEng (Hons) Aerospace Engineering - University of Liverpool	A B B
BSc (Hons) Computing Science - University of St Andrews	A A A		

CAREER OPPORTUNITIES
Architect Aircraft Design and Build Engineer Agriculture Chemical Engineer Civil Engineer Electrical and Electronic Engineer Environmental Engineer (including renewable energies and resources) Manufacturing Technologist Robotics Engineer Scientist Statistician Structural Engineer

ACADEMIC DEVELOPMENT DAY

Students benefit from a range of extra qualifications, work placements, volunteering opportunities and masterclasses delivered by industry experts. Options include:

- CREST Gold Award
- Science Club
- Extended Project Qualification
- HE+ programme in partnership with Cambridge University
- Guest speakers from industry and universities
- Work experience



AS CHOICES STEM

You will study three of the following AS subjects in the first year:
Chemistry/Maths/Physics or Computer Science/Maths/Physics

MATHS

Study three areas: Pure Mathematics, Statistics and Mechanics to develop problem solving skills. Understand maths and its processes to increase confidence, foster enjoyment and provide a strong foundation for further study. Learn how to apply maths in other fields of study and be aware of the relevance of it to the world of work and in society.

COMPUTER SCIENCE

Explore the fundamentals of programming (including design, problem solving and the use of data structures), the use of computer systems and their impact on society. Analyse the internal architecture of a computer, hardware, software, data representation and encryption techniques.

PHYSICS

Study atomic matter and its behaviour. From simple to further mechanics, gravitational and electric fields, identifying elements via light spectra - concepts which can be applied beyond Earth to stars, galaxies and black holes. Test with electrical, mechanical and observational experiments.

CHEMISTRY

Understand the world around you in much greater detail, finding out more about trans-fats or why some chemicals smell and others do not. Learn why your mobile device uses a lithium ion battery, how some medicines are made and why others can be dangerous.

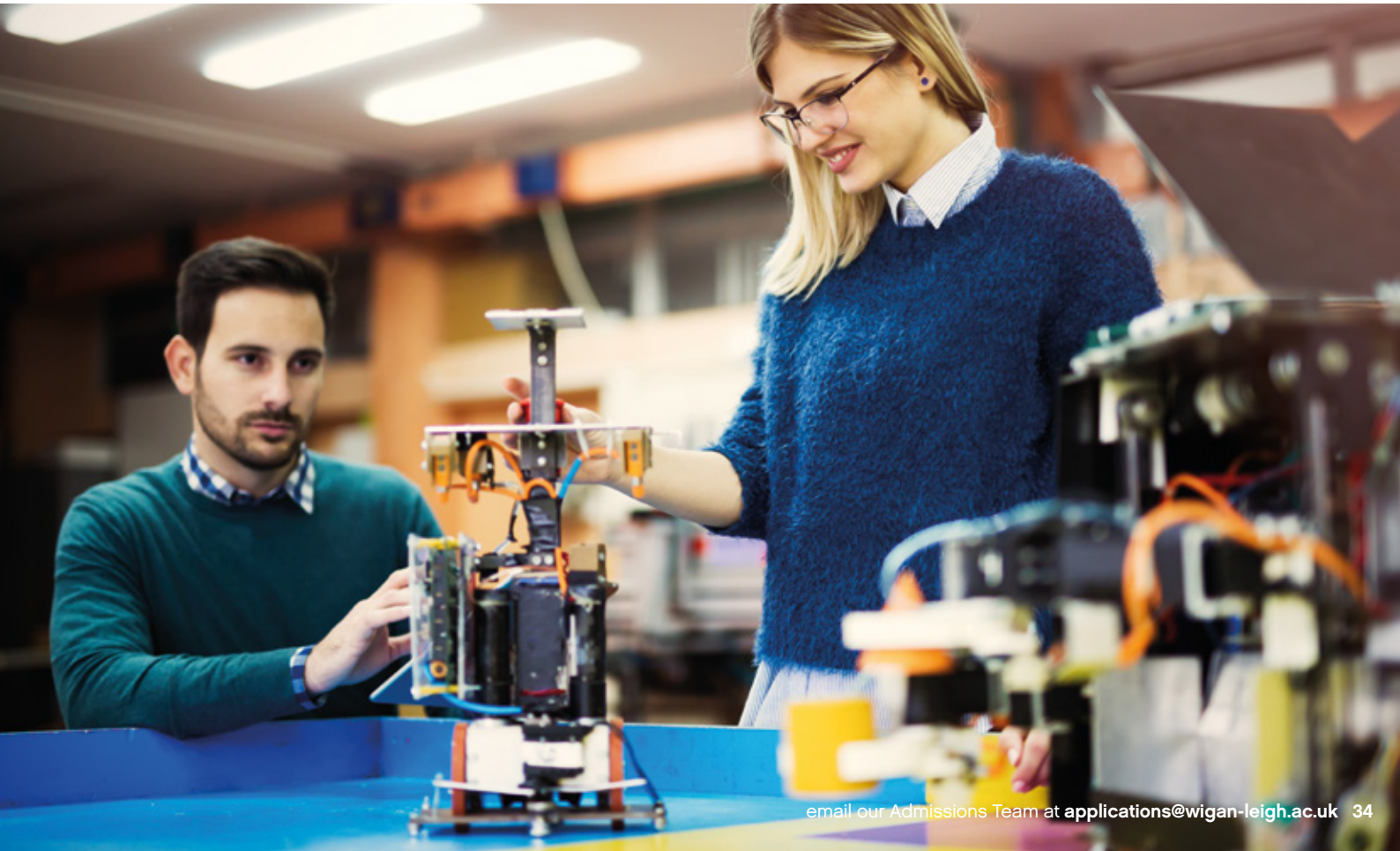


A LEVEL EXTENDED CHOICES - COMPUTING & TECHNOLOGY

If you choose to attend Parsons Walk, Wigan you may study a mixed programme of A Levels and a BTEC Level 3 qualification to help you fulfil your career ambitions.

This provides an alternative route to university and degree apprenticeships and may be suitable for those who prefer a combination of coursework and examinations.

A LEVELS (choose two from the following)	BTEC LEVEL 3 EXTENDED CERTIFICATE (equivalent to one A Level)	ENTRY REQUIREMENTS
Business Chemistry Maths Physics	BTEC Level 3 Extended Certificate in Computing Learn how a computer works and organises data, including introduction to programming constructs in different languages and object oriented and procedural programming. Explore data security and encryption techniques.	6 GCSEs graded 9-5 If you wish to study A Level Maths or Science, you will need a grade 6 in these subjects at GCSE.



SOCIAL SCIENCES & HUMANITIES



This pathway focusses on the study of human behaviour and interaction in social, cultural, environmental, economic and political contexts. The humanities and social sciences have a historical and contemporary focus, from personal to global contexts, and consider challenges for the future.

If you are unsure which career you want to follow please contact us, as you may study three A Levels of your choice, subject to discussion and timetable arrangements.

Our industry links and expert tutors provide the ideal platform for you to achieve the qualifications, transferable skills and confidence to follow a career in social science and humanities. The combination of academic and vocational qualifications is the perfect choice for students who aspire to study at top universities and establish a successful career in a wide range of areas from the civil service to teaching, journalism or social work.



A LEVEL PROFESSIONAL PATHWAYS					ENTRY REQUIREMENTS
					GCSE TARIFF
Psychology Sociology History + a further AS Level in year 1	OR	English Literature OR English Language & Literature* History Politics + a further AS Level in year 1	OR	Psychology Sociology English Literature OR English Language and Literature* + a further AS Level in year 1	8 GCSEs graded 9-5 of which a minimum of 4 GCSEs graded 9-6 (including English, Maths and Science)
Following successful completion of the AS year you may choose to continue to study all four subjects to A Level. However, you may progress with three subjects and retain an AS qualification in one, which will contribute to your UCAS or higher apprenticeship applications. In the second year of study you will be offered the opportunity to study AS Further Maths.					
* AS is no longer a stand alone option.					

EXAMPLE UNIVERSITY COURSES	TYPICAL ENTRY REQUIREMENTS
BA (Hons) Combined Honours in Social Sciences - Durham University	A* A A
BSc (Hons) Social Sciences with a Foundation Year - Loughborough University	B B B
BA (Hons) Human Social and Political Sciences - University of Cambridge	A* A B

CAREER OPPORTUNITIES
Civil Servant Charity Manager Communications Manager Journalist Marketing Executive Media Researcher Museum Curator Politician Probation Officer Teacher Youth Justice Worker

ACADEMIC DEVELOPMENT DAY

Students will benefit from a variety of extra qualifications, work placements, volunteering opportunities and a range of masterclasses delivered by industry experts. Options include:

- English Festival of Celebration
- Extended Project Qualification
- HE+ programme in partnership with Cambridge University
- Guest speakers from industry and universities
- Bar Mock Trial competition
- Work experience



KATIE WINROW

Former school: Southlands High School

Results:

A* English Combined

A* History

A Sociology

University:

BA (Hons) English Literature

- University of York

AS CHOICES SOCIAL SCIENCE

You will study 4 AS subjects in the first year in the combinations outlined on page 35 from the following subjects:

PSYCHOLOGY

Study the scientific explanations of the mind and behaviour including areas such as: forensic psychology, sport psychology, developmental (child) psychology, and topics from autism to a study of the language of psychopaths.

SOCIOLOGY

Develop an understanding of society through the analysis of social relationships, interactions and culture. Topics include: families and households, education, beliefs in society, crime and deviance and theory with research methods. Explore the impact of age, ethnicity, gender and social class.

HISTORY

Develop your skills of analysis and critical thinking through the study of British and European topics. Critically evaluate significant periods of the past and develop an understanding of what has gone before to prepare for the future.

ENGLISH LANGUAGE AND LITERATURE*

Explore representations of places, society and conflict through analysis of linguistics and literature across a range of non-literary texts, poetry, novels and drama.

ENGLISH LITERATURE

Learn how to analyse and evaluate poetry, prose and plays, debate and challenge the views of others, get a grounding of theory and key contextual areas and develop your skills in academic writing.

POLITICS

Gain thorough knowledge of the political systems of the UK and USA through comparison and debate, to fully understand how we are governed and what we can do to influence the process.

*AS is no longer a stand alone option.





PARSONS WALK CENTRE

- CENTRE OF EXCELLENCE IN CONSTRUCTION & ENGINEERING
- CENTRE FOR ADVANCED TECHNICAL STUDIES

4.30PM - 7.30PM

• Monday 30 January 2023 • Monday 24 April 2023

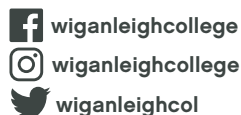
LEIGH COLLEGE

4.30PM - 7.30PM

• Monday 6 February 2023



Wigan & Leigh
College



01942 761 111
wigan-leigh.ac.uk

OPEN EVENTS

THE PROFESSIONAL HONOURS PROGRAMME

GETTING TO COLLEGE

All centres are within easy reach of public transport links.

WIGAN CENTRES

Wigan & Leigh College (Parsons Walk Centre)
Parsons Walk, Wigan WN1 1RR

Centre of Excellence in Engineering & Construction (Pagefield Centre)
Walkden Avenue, Wigan WN1 2JH



LEIGH COLLEGE

Leigh College
Leigh Sports Village
Sale Way,
Leigh WN7 4JY



For more information visit wigan-leigh.ac.uk/how-to-find-us

This guide was printed in August 2022 for the 23/24 intake. Wigan & Leigh College (the 'College') endeavours to ensure that the information in this publication is accurate at the time of going to publication, but because this prospectus has been printed in advance of courses starting dates, all courses are offered subject to student numbers and the College reserves the right to amend, withdraw or amalgamate any of the courses, fees, services, locations or facilities described at any time before you apply for a place on a course of study.

There are a number of reasons why changes to course information may need to be made prior to you applying for a place on a course at the College. These may include, but are not limited to, operational and/or academic reasons. Prospective students are therefore reminded that they are responsible for ensuring, prior to applying to study on a course of study at the College, that they review up-to-date course information, which is available by visiting wigan-leigh.ac.uk or by contacting us at 01942 761 111.

In addition, the College may be required to withdraw courses due to cohort numbers not being sufficient - please contact us if you require information in relation to cohort requirements on 01942 761 111.

Further information describing the teaching, examination and other educational, pastoral and student support services offered by the College are available at: wigan-leigh.ac.uk. Prospective students should therefore fully familiarise themselves with these documents prior to applying on a course at the College.

A Level Application Form

For use by applicants under the age of 19 on 31 August 2023

This application form is only to be completed if you are not already a student at the College and you wish to apply for A Levels starting in September 2023.



Section 1 - Tell us about yourself			
Last Name		Ref (office use)	
First Names			
Home Address	Date of Birth	Age on 31/08/23	
	Mobile		
	Telephone		
Postcode	Email		
PRESENT OR LAST SCHOOL OR COLLEGE ATTENDED			
Have you ever studied at Wigan & Leigh College before? Yes <input type="checkbox"/> No <input type="checkbox"/>			
Have you been a permanent resident in the UK during the last 3 years? Yes <input type="checkbox"/> No <input type="checkbox"/>			
Section 2 - Tell us which course you would like to study at Wigan & Leigh College			
A Levels (a Pathway or specific A Levels)		A Level Extended Choices (Only available at Parsons Walk Centre, Wigan)	
Where would you like to study? Wigan <input type="checkbox"/> Leigh <input type="checkbox"/>			
If you are unsure about which course or subject you wish to study, please contact our Admissions Team on 01942 761 111.			
Section 3 - Tell us about your qualifications			
Subject (Example: Art)	Qualification (Example: GCSE)	Estimated grade (Example: Grade 6)	Estimated grade (Example: Grade 6)
Section 4 - Tell us about any additional support you may need			
Do you have: <ul style="list-style-type: none">• A disability (eg visual impairment, hard of hearing, mental health difficulties, epilepsy)• A learning difficulty (eg dyslexia, dyscalculia)		• A major health condition that may affect your course If so, please tick this box <input type="checkbox"/> We will contact you to discuss your support requirements.	
Section 5 - Declaration			
The information you provide in this application form will be used to process your application to College and communicate with you for admission to Wigan & Leigh College. Under the General Data Protection Regulations, we will store this information for a period of 12 months after the start date of the course which you are applying for, after which it will be destroyed securely. We will only share this information with your current school and Wigan Council for monitoring and tracking purposes. The information will not be shared with any other third party unless required to do so for legal reasons. By signing this form, you agree to the above.			
Applicant signature		Date	
If you would like to receive information about the College, future events and courses please tick the appropriate box for how you would like us to keep you informed: phone / text <input type="checkbox"/> email <input type="checkbox"/> post <input type="checkbox"/>			

Supporting Statement

What are your career aspirations? What have you done to support your application (eg voluntary work, sports achievements, work experience).

Market Research

What was your MAIN reason for choosing Wigan & Leigh College?

☐ 1. Location

☐ 2. Choice of course

☐ 3. Reputation of College

How were you made aware of the College? (tick all that apply)

☐ 4. Careers Service

☐ 5. School or College

☐ 6. Telephoned College

☐ 7. Emailed College

☐ 8. College Website

☐ 9. Recommendation

☐ 10. Prospectus

☐ 11. Employer

☐ 12. Newspaper Advert

☐ 13. Radio Advert

☐ 14. Poster / Leaflet

☐ 15. Event

☐ 16. Facebook

☐ 17. Twitter

☐ 18. LinkedIn

☐ 19. YouTube

☐ 20. Email / SMS from College

☐ 21. Instagram

☐ 22. Billboard

☐ 23. Banner Outside College

☐ 24. Mail from College

☐ 25. Online

If you need assistance with completing your application form please contact our Admissions Team on 01942 761 111.

FOLD HERE

FOLD HERE

Business Reply
Licence Number
RTLB-ZERR-TGRE



College Admissions
wigan & Leigh College
PO Box 53
Parson's walk
WIGAN
WN1 1RS



HOW TO APPLY

Tear out and complete the application form opposite and return it FREEPOST or drop it into one of our College receptions

Apply online today at wigan-leigh.ac.uk/apply

THE APPLICATION PROCESS

1. Complete an Application Form

You can fill in the form at the back of this prospectus or visit wigan-leigh.ac.uk/apply

2. The Interview

Once we receive your application form, we will send you an appointment for your admissions interview. At your interview you will have the opportunity to ensure that the course you have chosen is right for you and your future career goals.

3. The Offer

At the end of your interview, if you and the interviewer decide that this is the right programme for you, you will be offered a place at the College. Your offer will be conditional on you achieving certain grades in your GCSEs and successfully completing your entrance exam.

4. Invited to a New Student Day

You will be invited to a new student day in July where you will sample your programme, meet tutors and fellow students to prepare you for the start of the term.

5. Enrolment

In August, once you have received your GCSE results, you will be invited into College to complete your enrolment.

6. The Experience

In September start the **A Level Programme**.

OPEN DAYS

Open Days are a great way to meet the tutors to find out more about the **A Level Professional Honours Programmes** that you are interested in and see our facilities.

PARSONS WALK CENTRE
CENTRE FOR ADVANCED TECHNICAL STUDIES
CENTRE OF EXCELLENCE IN CREATIVE ARTS
PAGEFIELD CENTRE

Monday 10 October 2022

Monday 7 November 2022

Monday 30 January 2023

Monday 24 April 2023

LEIGH COLLEGE

Monday 17 October 2022

Monday 14 November 2022

Monday 6 February 2023

To find out more about our open days please go to: wigan-leigh.ac.uk/opendays



wigan-leigh.ac.uk/alevel

Call our Admissions Team on **01942 761 111** or email applications@wigan-leigh.ac.uk